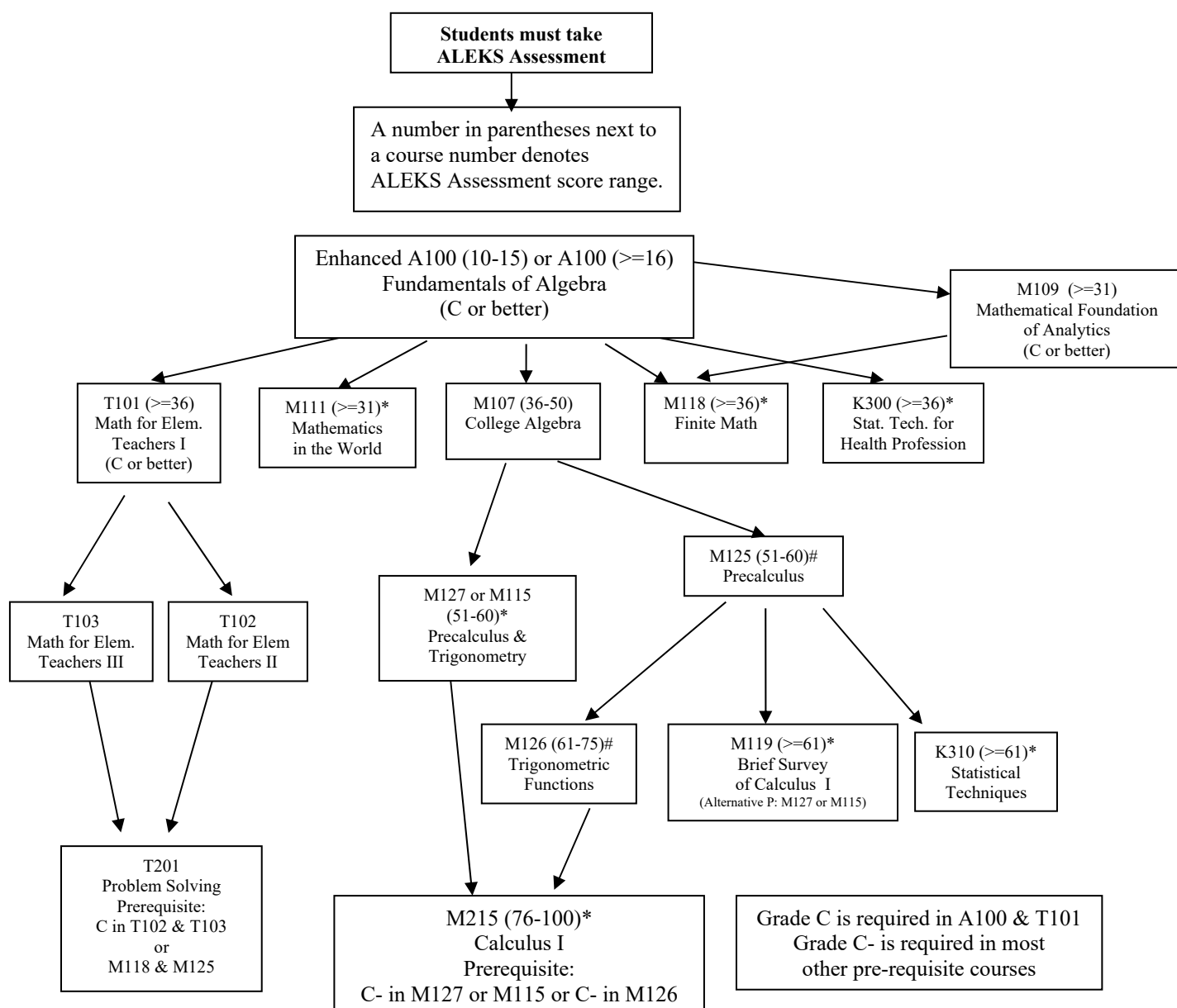


# IU South Bend Lower Level Mathematics Courses and Prerequisites



\* Note: Courses that meet General Education Quantitative Reasoning Requirement are M111, M115, M118, M119, M120, (M125 and M126), M127, M215, M216, K300, K310. **(Not M107)**

# Note: M115 (5 credits) = M125 (3 credits) + M126 (2 credits) = M127 (5 credits)  
M125 and M126 together meet Quantitative Reasoning Requirement

Science Major recommended sequence: A100  $\Rightarrow$  M107  $\Rightarrow$  M127 (or M125 & M126) or M115  $\Rightarrow$  M215\*  
(Note: only M215 is required, others are pre-requisite courses)

Business Major recommended sequence: A100  $\Rightarrow$  M109  $\Rightarrow$  M118\*  
(Note: only M109 and M118 are required. A100 is pre-requisite courses)

Consult your adviser about your math requirement, and from Bulletin: <https://bulletins.iu.edu/iusb/>  
To take ALEKS assessment, please go to: <https://students.iusb.edu/placement-exams/aleks-math-exam.html>